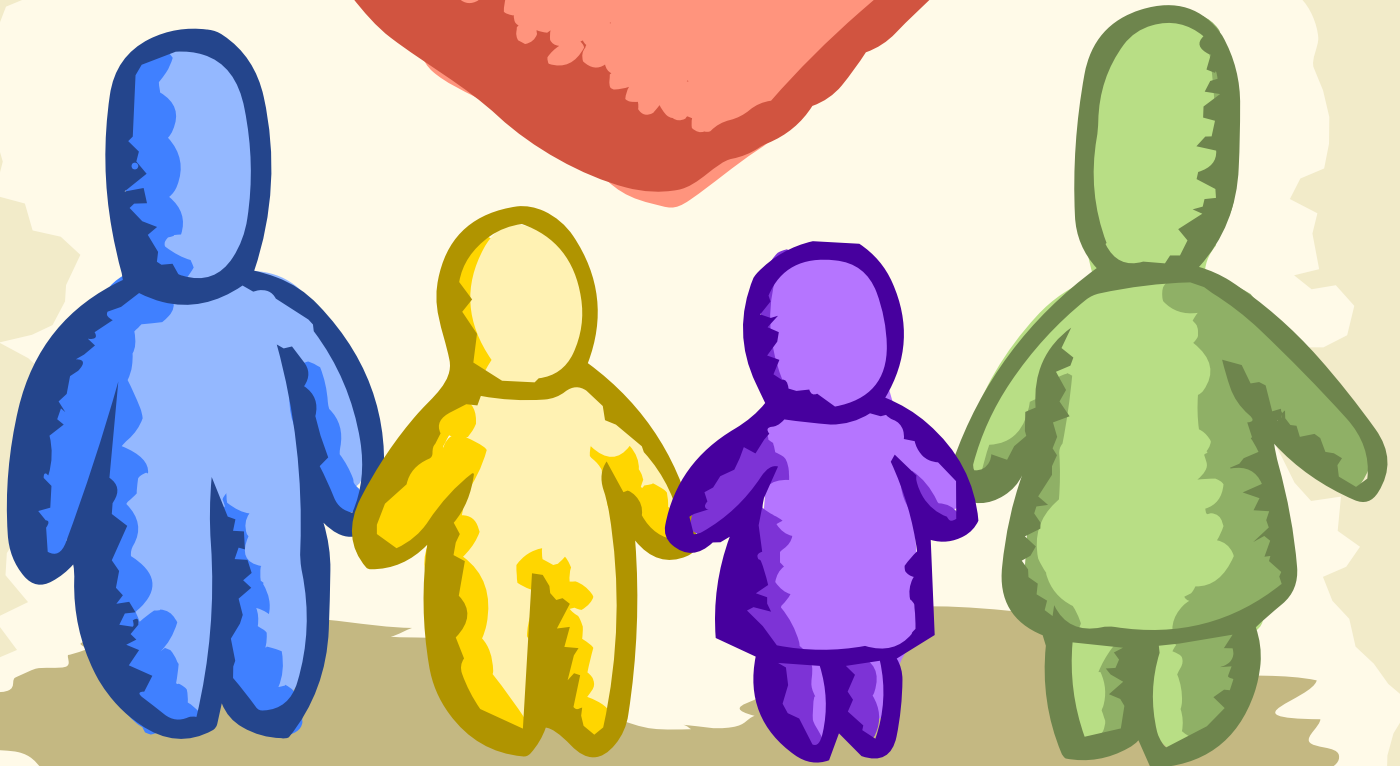


**FAMILY
RESOURCE
CENTER**
OF SOUTH FLORIDA



Preventing and Treating Child Abuse &
Neglect by Strengthening Families

Annual Report 2009 | 2010

Board of Directors

ROBERT FERNANDEZ, ESQ.
Chairman

MARC BERENFELD, C.P.A.
Vice Chairman

JOHN MEYER
Treasurer

ED KING
Secretary

JOHN HUTTON, ESQ.
Immediate Past Chairman

Ed Andujar
Carlos Casal
John P. David
Steve Hope
Kai Jacobs, Esq.
Jo Mendez
Jessica Wilcox

ADVISORY BOARD
Barbara F. Garrett
John P. Keller, Esq.
Eric McKenna
Larry Silverman, Esq.
Mario Trueba

EXECUTIVE DIRECTOR
Oren Wunderman, Ph.D.



Dear Friends of Family Resource Center,

Throughout the past year, Family Resource Center (“FRC”) has continued to be ranked within the top three agencies providing full case management in Miami- Dade County. Our Kids of Miami-Dade/ Monroe now tracks 11 agency performance measures, and even with the addition of several new measures this year, FRC was able to stay on top. But with each additional performance measure, the paperwork and tracking increases, thus burdening our Quality Assurance staff and Administrative staff with increased responsibilities.

Despite the additional requirements, we continue upgrading our services and in 2010 our organization was recognized by Florida Trend Magazine as one of the Best Companies to Work for in Florida. Also, we were voted the “2010 Ideal Workplace” by the Coral Gables Chamber of Commerce. These recognitions reflect our commitment to provide professional development and ongoing support to our staff, thereby ensuring best-in-class service to our clients.

Since the privatization of the foster care system in 2005, some outstanding positive outcomes have been achieved for kids. The recent Miami-Dade performance statistics reflect a significant improvement in system-wide quality. On average, 70% of Miami’s children return home within 12 months of entering foster care — this is an increase of 22% since 2005. Additionally, over the last five years the percentage of Miami’s children that are adopted within 24 months of entering care has risen 15% and now exceeds the federal standard of 32%. Further, the number of children living away from their parents continues to decline and in total we have seen a drop of 49% since services began in May 2005. These outcomes show that all local child welfare agencies are working together towards the same goal — providing even higher quality services to children and families who face difficult challenges.

As we consider the work that must be done in year ahead, maintaining our leadership position requires more than keeping up with the status quo, and more than reflexive changing with the times. It requires innovative thinking, the establishment of long-term goals, and a commitment to providing children and families with the services and care they need in a highly efficient and effective manner. We could not provide the range or depth of services required without donors like you, who believe in our mission. Your support enables us to provide survivors of abuse and neglect the opportunity to live and grow with the nurturing and stability every child deserves.

Thank you for being part of the solution. Together, we can and will make a difference in the lives of the children of Miami-Dade.

Sincerely,

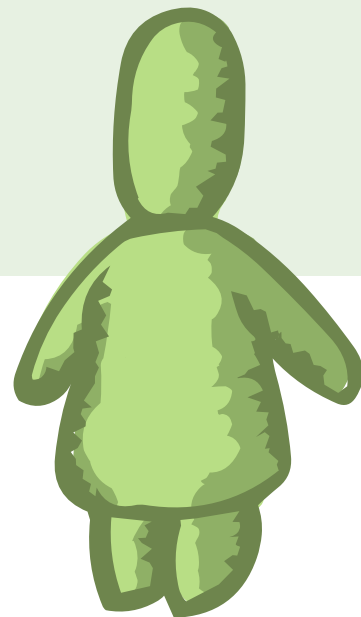


Oren Wunderman, Ph.D.

Executive Director

Family Resource Center of South Florida, Inc.

Since 2008, Family Resource Center has achieved an 85% success rate of reuniting families who are part of our Dependency Drug Court Program.





Adult substance abuse is cited as one of the three most common reasons children enter foster care. As many as 85% of all cases of child abuse and neglect each year involve parental alcohol or drug abuse.

PHOTO COURTESY OF
THE CHILDREN'S TRUST
MIAMI HEART GALLERY

ABOUT FAMILY RESOURCE CENTER

OUR HISTORY

Family Resource Center of South Florida, Inc. was founded in 1978 by a group of concerned citizens with the mission of preventing and treating child abuse and neglect through the strengthening of families. Today, the agency is a leader in child welfare services, providing a full continuum of interventions aimed at breaking the cycle of abuse.

South Florida was the last area in Florida to convert to a privatized child welfare system. In 2005, Family Resource Center was chosen to be one of six agencies that would provide Full Case Management services for foster children within Miami-Dade County. As of June 2010, we are now serving close to 600 children in the dependency care system. In total, during fiscal year 2009-2010, FRC provided services to more than 2,500 children, adolescents and adults.

OUR FAMILY

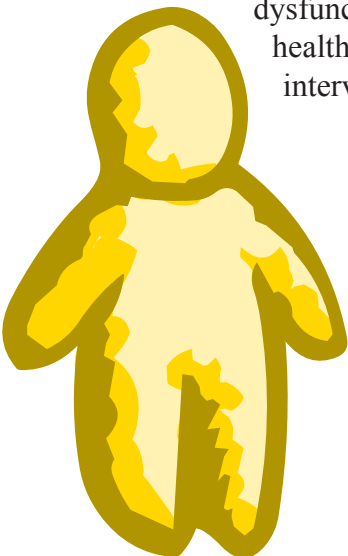
Family Resource Center's organizational structure is comprised of a thirteen member Board of Directors, an Executive Director, four Department Directors, 94 full-time staff, 5 part-time staff, and approximately 75 volunteers that have supported our work in the last year. Services are available to our clients in English, Spanish, and Haitian Creole.

OUR ACCREDITATION

Family Resource Center of South Florida was accredited by the Joint Commission on Accreditation of Healthcare Organizations (JCAHO) in June 2005 and reaccredited in June 2008. The JCAHO accreditation represents the gold standard of healthcare and mental healthcare excellence.

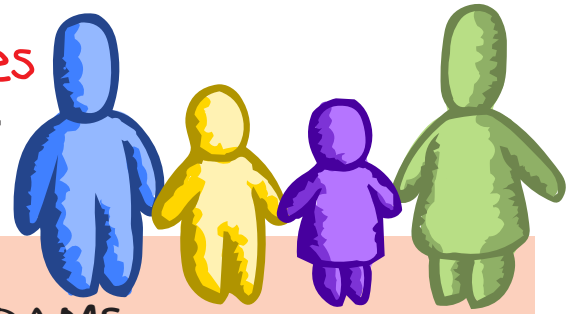
OUR GOAL

Family Resource Center is driven by the principle that nothing is more fundamental to a community than the safety and well being of its children. Our goal is to prevent and change dysfunctional parent/child interaction patterns, promote positive self-concepts, and build healthy relationships to prevent child abuse and neglect through family support, crisis intervention, housing location, family preservation, parent education and counseling.



Supporting & Strengthening Families

2009-2010 IMPACT



FAMILY RESOURCE CENTER PROGRAMS

ADOPTIONS

2009-2010 -121 adoptions

2008-2009- 42 adoptions

2007-2008 - 19 adoptions

FOSTER HOMES

2009-2010 – 73 open foster homes containing a total of 191 licensed beds

FULL CASE MANAGEMENT PROGRAM

854 Children Served in 2009-2010

Full Case Management is the coordination and monitoring of services on behalf of a client and his or her caretakers. These services include abuse prevention/treatment, mental health counseling, psychiatric consultation, case plan management, medical care, dental care and the provision of a nurturing, therapeutic living environment. A key element of case management in child welfare is the ongoing assessment of the client's needs and progress in services. FRC makes every effort to assist in permanent placement of those children in our care whose parents have had their parental rights terminated.

ROAD TO INDEPENDENCE PROGRAM

46 Clients Served in 2009-2010

The Department of Children and Families' Independent Living Transition Services Program provides young adults formerly in foster care with services and financial assistance to help them successfully transition into adulthood. Services include assistance with money management skills, educational assistance, household management skills, employment preparation, and other services as dictated by client circumstances.

TUTORING PROGRAM

7,432 Hours Provided in 2009-2010

The trauma of child abuse and subsequent removal from the home can lead a child to perform below grade level. This program provides in-home tutoring for all K-12 subject areas with a focus on meeting the specific needs of the foster care population. All students are given an Individualized Learning Plan and Tutoring Materials that are aligned to the FCAT.

MENTAL HEALTH SERVICES

240 Children, Adolescents and Adults Served in 2009-2010

This service provides intensive counseling to families in crisis as identified by the Department of Children and Families and Our Kids of Miami-Dade/Monroe, Inc. due to documented incidence of child abuse and/or neglect.

SUPERVISED VISITATION SERVICES

1,750 hours provided in 2009-2010

This service is provided to families that have had their children removed by the Department of Children and Families. It allows the parent the opportunity to meet with the child in a safe, nurturing environment. Visits can take place from once a week to three times a week depending on the court order. The length of each visit is also determined by the judge overseeing the case. It is typically between one and two hours.

SUBSTANCE ABUSE OUTPATIENT PROGRAM

60 adults served in 2009-2010

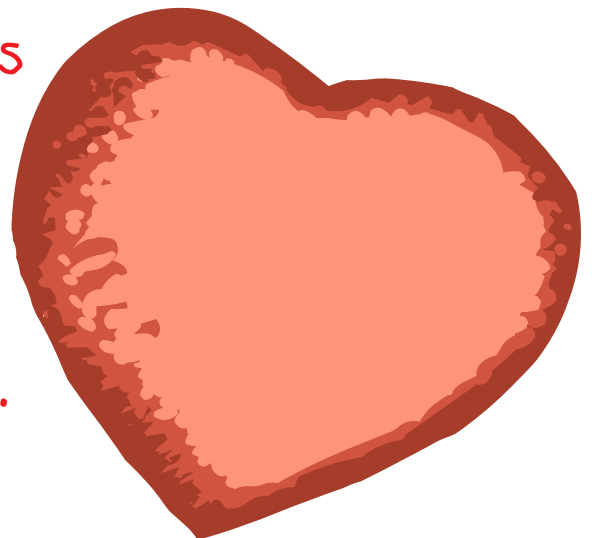
This program provides crisis intervention, individual and group counseling and advocacy for highly dysfunctional families who are at risk of having their children removed permanently or have had children removed due to an addiction problem.

PARENT EDUCATION PROGRAM

173 Clients Served in 2009-2010

Family Resource Center's Parent Education Program has been in operation since 1999 and to date has served over 2,000 families. It is one of only four such programs in Miami-Dade that is approved by the Judiciary of the Dependency Court and by Our Kids of Miami-Dade/Monroe, Inc. The curriculum is an internationally recognized psycho-educational program that is distinguished for its effectiveness in improving parenting skills and parent-child interactions with at-risk families. The FRC Parent Education Program is designed to promote positive parent-child interaction and healthy childhood growth and development, thereby preventing the occurrence or reoccurrence of child abuse and neglect.

During the last fiscal year, 98% of clients who completed FRC's Parenting Education Program had no findings of verified child maltreatment three and six months after completion.



Adoption Profiles

Family Resource Center of South Florida is pleased to announce the adoption of 121 children from the Miami-Dade area during the fiscal year ending June 30, 2010. Given an annual goal of 59 finalized adoptions by Our Kids of Miami-Dade/Monroe, Family Resource Center surpassed the goal by more than 100%. We are thankful that so many loving adults stepped forward to give these children forever families. The children's case managers, our legal counsel, and particularly our adoption specialist, worked incredibly hard to make sure that each case could move forward quickly, thus reducing the time that the children spent in the foster care system.

Approximately two-thirds of the youth we care for will be reunified with their parent(s), while one-third ultimately become free for adoption. Family Resource Center works to respectfully treat, rehabilitate, and mentor troubled families through comprehensive, responsive care. In cases where parental reunification is not possible, Family Resource Center works tirelessly to find caring adoptive homes by providing recruiting and training services to prospective adoptive parents.



NATIONAL ADOPTION DAY

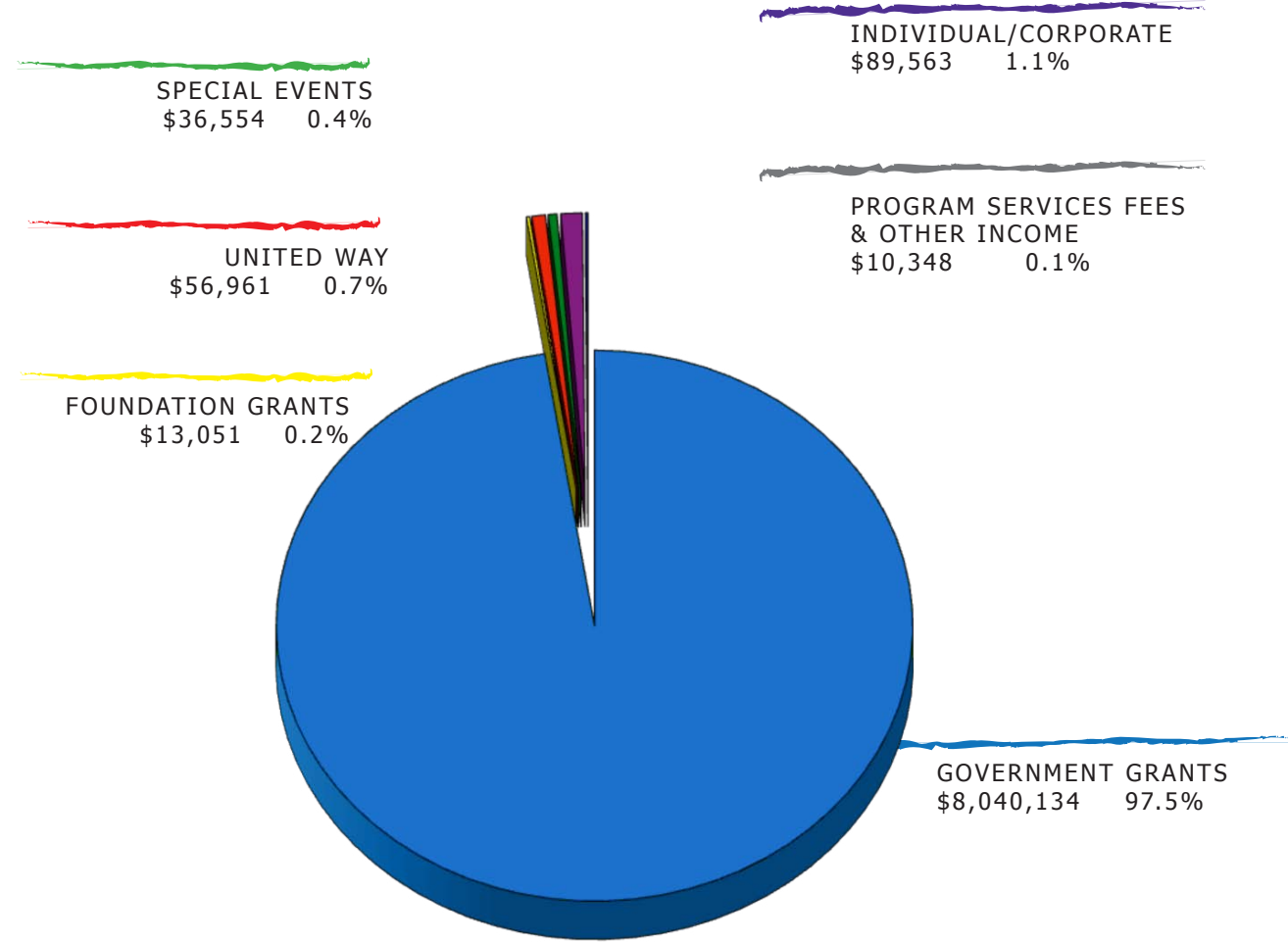
Photos shown here celebrate FRC adoptions held during National Adoption Day, part of a month-long series of activities during November designed to raise awareness of children currently in foster care in need of families (115,000 across the country). Activities and celebrations are kicked off with a Presidential Proclamation, followed by local programs and events that promote positive perceptions, debunk the myths, and draw attention to the tens of thousands of children in foster care who wait and hope for permanent homes.

Last year, Florida's Child Abuse Hotline
received 220,354 calls — a 33% increase
over the prior year.



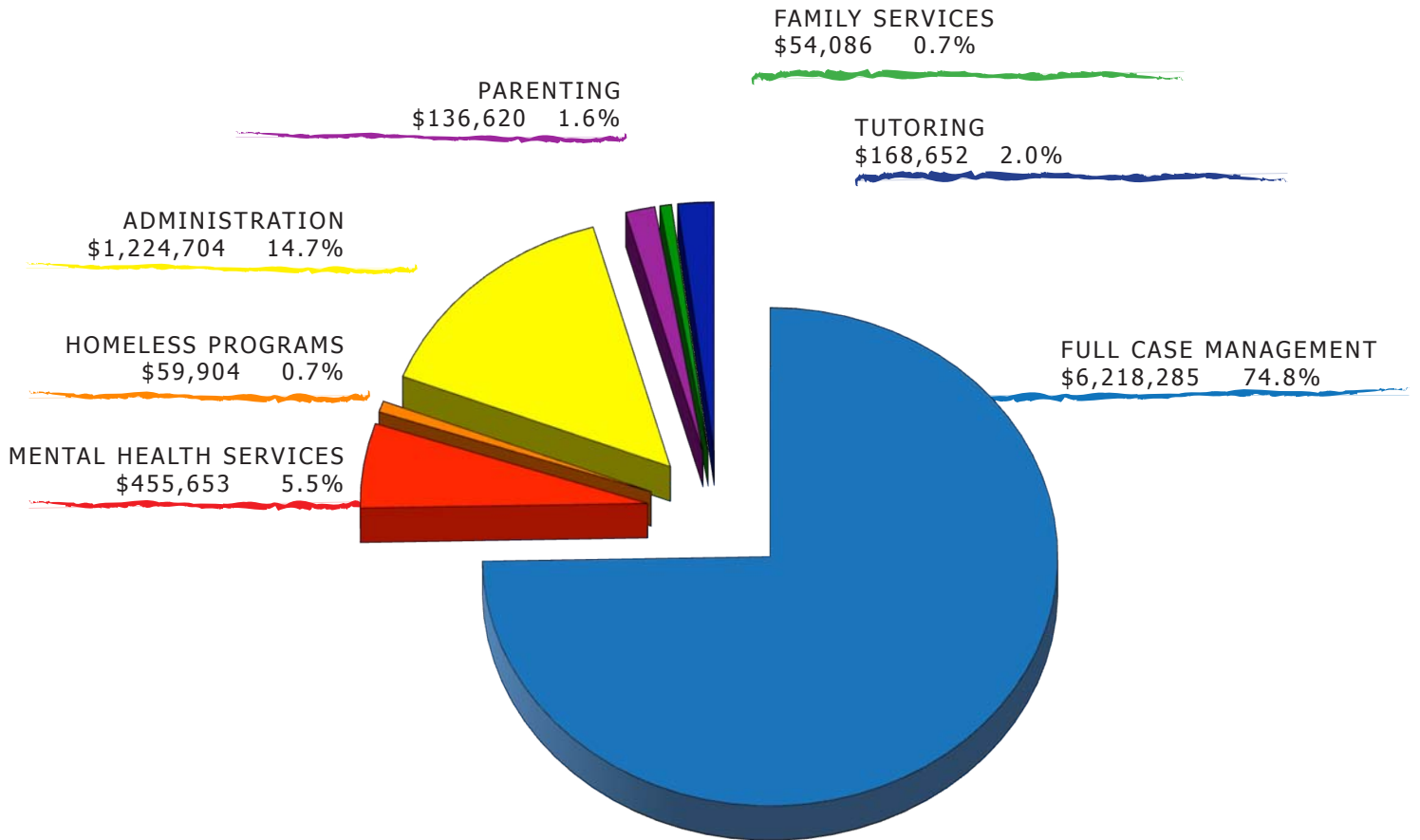
PHOTO COURTESY OF
THE CHILDREN'S TRUST
MIAMI HEART GALLERY

Sources of Income



GOVERNMENT GRANTS & CONTRACTS	\$8,040,134.	97.5%
INDIVIDUAL/CORPORATE	\$89,563.	1.1%
UNITED WAY	\$56,961.	0.7%
SPECIAL EVENTS.	\$36,554.	0.4%
FOUNDATION GRANTS	\$13,051.	0.2%
PROGRAM SERVICE FEES & OTHER INCOME. . .	\$10,348.	0.1%
TOTAL	\$8,246,611	100%

Operating Expenses



FULL CASE MANAGEMENT	\$6,218,285	74.8%
ADMINISTRATION	\$1,224,704	14.7%
MENTAL HEALTH SERVICES	\$455,653	5.5%
TUTORING	\$168,652	2.0%
PARENTING PROGRAM	\$136,620	1.6%
HOMELESS PROGRAMS	\$59,904	0.7%
FAMILY SERVICES	\$54,086	0.7%
TOTAL	\$8,317,904	100%

Family Resource Center Donor List

JULY 1, 2009 –JUNE 30, 2010

LEAD SUPPORTER (\$8,000,000)

Our Kids of Miami-Dade/Monroe, Inc.

\$10,000 +

Estate of Esther Ragosin
Miami-Dade County,
Department of Human Services
Miami-Dade County, Homeless Trust
Ronald McDonald House Charities
South Florida Behavioral Health Network
United Way of Miami-Dade

\$5,000 - \$9,999

Charles and Joan Hermanowski
Family Foundation
H.E.L.P Miami
Sabadell United Bank

\$2,500 - \$4,999

Barbie Brown Rivera
Daily Business Review
Lasoderm
Margarita M. Pons
Seitlin Risk Management & Insurance
Udonis Haslem Children's Foundation
Voices for Children Foundation, Inc.

\$1,000 - \$2,499

4-IT, Inc.
Adorno & Yoss
Anonymous
Avila Rodriguez Hernandez
Mena & Ferri LLP
Avionica, Inc.
Berenfeld, Spritzer, Schechter & Sheer
BNI Miami-Dade
Boardroom Communications Incorporated
Carlos M. Musso
City National Bank of Florida
City of Miami Parks Department
Coral Gables Chamber of Commerce
Dennis Nowak, Esq.

Francis J. and Mary A. Meyer
Charitable Fund Triangle Foundation
Guardian Health Center PA
Hunton & Williams
John B. Hutton
Marine Toys for Tots Foundation
Miami Science Museum
Norwegian Cruise Line
Pak 2 Go Moving
Podhurst Orseck, P.A.
Rosario Ordonez
Royal Caribbean Cruises, Ltd.
Russ Oasis
The Bridgespan Group, Inc.
Ver Ploeg & Lumpkin

\$500-\$999

Amy E. Zakarin
Bilzin Sumberg Baena Price & Axelrod LLP
Compass Health Systems
Continental Real Estate Companies
Dade Community Foundation
Dade Juvenile Residential Facility
David Williams
Ed King Pop Art
Elizabeth Padron
Florida Marlins, L.P.
Gables Capital Management, Inc.
Holland & Knight LLP
Kevin J. Veilleux
Marc A. Berenfeld
Maria Michela Zarrillo
Michael and Ronnie Levine
Philanthropic Fund
Milagrito Saltores
Money Clip Direct
Oasis Chiropractic Center
Paul Maley
Photo Offset, Inc.
Sony Pictures Television
Total Bank
Vizcaya Museum and Gardens
White & Case, LLP

\$250 - \$499

Alex L. Wallau II
ALS Photography
Andrew Schuster
Andy Rodriguez
Arnaldo Perez
BNI Miami-Dade, South Beach
Claire Wallau Musso
de la O, Marko, Magnolnick & Leyton, P.A.
Donald A. Kaplan Philanthropic Fund
Dreamworld Initiative Foundation
Ed Andujar
Fleming's Prime Steakhouse & Wine Bar
Freedom Designs
Greenberg Traurig, LLP
Health Foundation of South Florida
Ismael Ramos
Jessica Wilcox
John P. Meyer
Larry Kline Wholesale Meats & Provisions
Lash & Goldberg, LLP
M & R Auto Repair
Marin & Sons
Miami Heat
Miami Seaquarium
Michael Goldstein
Morgan Keegan & Company, Inc.
Public Adjusters Incorporated
Robert H. Fernandez, P.A.
Rosa de la O
Schaffran Propeller USA, LLC
SeaWorld Parks & Entertainment
Susan Fox-Rosellini
Terilee Wunderman
Troy Frazer, M.D.

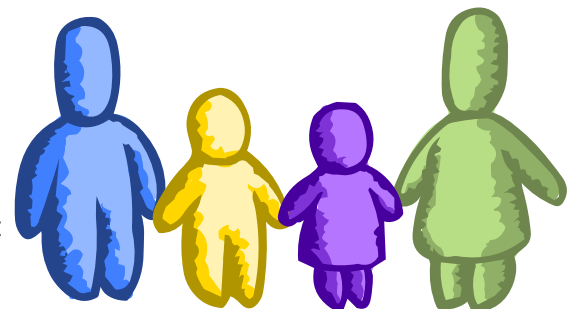
\$1-\$249

Adrian E. Ballard
Alyn Higgins
Ana Capri Restaurant
Ana Lucia Samaniego
Ana Rodriguez
Andrea Perez

Physical abuse is the leading cause of death among children.

Andrew Kaplan
Angel Alexander Diaz Foundation, Inc.
Angela Castillo
Angelique Euro Café
Anna B. Wunderman
Anne-Marie Tristan
AT&T
Bahama Breeze Island Grill
Barakat, Jacobs & Associates, P.L.
Bernard & Sallie Olin
Bernard Weinstein
Brian Sprouse
Borrego Family, The
Busch Gardens
Capri Pasta Grill
Carmen R. Pintado-Arasi, Esq.
Carol Russo
Casanova Family, The
Chanta Brown
Christopher Dawson, Esq.
Christopher Latty
Cindy M. Lundy
Claudia Duarte
Cool-de-sac
Corpo Yoga
D & L Hair Studio
David S. Messinger
Dawn Mailraith
Debra H. Williams
Denise Mason
Dorit Matthews
Edible Arrangements Pinecrest
Eduardo Llorca
Eduardo Rodriguez
Estelle Greco
Esther M. Block
Fireman Derek's Key Lime Pie
Gill S. Freeman
Gold Stirrup Academy
Gurlyn McIntosh
Henry L. Aguilo
Herminia S. Mendez
Houston's Restaurant
Idania Lemus
Ileana Z. Rodriguez
Ivan A. Garces
John Antieau
John O. Palenchar
John Rafell, D.D.S.
Jose Vasquez
Josefa Mendez
Kai Jacobs, Esq.
Katherine Phillips
Kathy Antieau
Kendall Village 16
Kenialys Garcia
Kim Sprouse
Kresse & Associates, LLC
Kristina M. Pritchett
Laleh K. Gonsalves
Laura Kruger
Leiseann Mentis
Leticia M. Gobel
Linda D. Ellenburg
Los Ranchos Steakhouse
Lourdes Pons
Lucy G. DeLange
Luz A. Florez
Maria D. Villalobos
Marisol Mateos
Mark A. Hebert
Mark Parker
Maroosh Mediterranean Restaurant
Marta Grewal
Massage Envy of Coral Gables
Mattabella Vineyards
Maybelin Gutierrez
Miami City Ballet
miamipace.com
Michael Hebbard
Michelle Palau
Michelle Wolfe
Miriam Ramos
Mykonos
Myrna I. Torres
Natalie Green
Network for Good
Nikita Paris Salon
On The Border Mexican Grill
Osmara Vindel International
Pat Gannon
Patrick Larco
Paula B. Stanley
Pauline Hamian
Pierre A. Smith
Planet Beach Kendall
Planet Beach Pinecrest
Planet Beach South Beach
Premier Dental Solutions Inc.
Rare 2002 Charitable Lead Annuity Trust
Ricardo Salvato
Robert Kutner
Rosario Hidalgo-Vargas
Ruds Inc. d/b/a MTEch
Shanika Smith
Sharon Leibman, Esq.
Sheneka Regis
Silpada Design Jewelry
Silvia Caskell
Silvia Lopez
Silvia Royo
Simone Segredo
Sky & Sea Spa
Splitsville
Stehli Krause
Steiner Leisure Limited
Stephane Jeune
Steven E. Eisenberg
Suzette M. Robley
Tania Armenta
Tarpon Bend
Tarrod Mason
Terri Schermer
Xiomara Alfonso
Yolanda Lopez
Yulexi Perez

If you donated between July 1, 2009 and June 30, 2010 and your name is not listed, please contact our development team so our records can be updated.



The Year That Was

Family Resource Center saw some great accomplishments in the 2009-2010 fiscal year. The year began with the Miami-Dade Community Based Care Alliance, the community's voice in child welfare, awarding FRC's Dependency Drug Court Program the *Community Partners Award* during the 4th Annual Regional Child Welfare Conference awards luncheon. The program also received an expansion grant of \$500,000 which will allow for client capacity to go from 62 participants to 100 participants over the next year. FRC has achieved a notably high level of success with clients in this initiative; achieving 85% family reunification since the program began.

FRC also joined an innovative pilot program called the "Juvenile Court Cross-Over Project." The purpose of this program is to ensure that a young person who has a case in both the Delinquency Court and the Dependency Court will be cared for by the same Judge, the same DCF attorneys and the same Full Case Management Treatment Team, thus optimizing the treatment effectiveness and financial efficiency.

In addition, our agency finished the fiscal year having earned commendations from Our Kids of Miami-Dade/Monroe, Inc. for the work done with foster children and foster parents in our Full Case Management Program. FRC also surpassed its adoption goal set by Our Kids which was 59 finalized adoptions by June 30, 2010 by more than 100%.



PHOTO COURTESY OF
THE CHILDREN'S TRUST
MIAMI HEART GALLERY

Not only was FRC the only Full Case Management agency to meet its goal, the organization finalized 121 adoptions by the deadline and became the first agency in the state to finalize more than 100 adoptions in a single year. Lastly, FRC was recognized as one of Florida Trend Magazine's BEST PLACE TO WORK IN 2010.

FRC also held its fourteenth annual Bowling Tournament where we raised \$31,000 to continue to provide quality services to our clients. A new partnership with the Udonis Haslem Children's Foundation enabled us to pull together an extraordinary Spring Celebration for the children in our care. We also hosted our second annual wine tasting which brought out more than 125 people who showed their support of FRC. Our signature gala, The Children's Hero Award, took place in June 2010 and this year Judge Jerri Cohen was honored for all of her hard work on behalf of the children and families in the Dependency Drug Court. A special "Thank You" goes out to everyone who supported our events.

In the area of leadership, FRC added two new board members, Ed Andujar of FedEx and Carlos Casal from Turner Construction. We also were able to add additional resources in our clinical department. Specifically, FRC is proud to announce the addition of a dyadic therapist to our clinical staff, Ms. Ana Hereau-Gonzalez, LMHC. Her practice, Child Parent Psychotherapy (CPP), is an evidence-based attachment therapy proven to be effective in helping trauma-attachment disordered children heal; that is, develop healthy, trusting, and secure relationships with their caregivers. It is geared towards children ages 0-5 who have trauma caused by significant and substantial experiences of neglect, abuse, or prolonged and unresolved pain. These experiences disrupt the normal attachment process so that the child's capacity to form a secure attachment with a caregiver is distorted or absent. The therapy brings the parent and child dyad together to address these issues and form bonds in a safe and nurturing environment. In addition, it enhances the parent's and/or caregiver's understanding of child development including cognition, communication, physical and social/emotional.



Carlos Casal, Senior Project Executive, Turner Construction Company



Ed Andujar, Managing Director/Controller, FedEx

Thanks to a tireless staff and some of the most amazing donors and supporters, Family Resource Center has had a truly outstanding year!



Helpful Terms

ADOPTIONS

The social, emotional, and legal process through which children who will not be raised by their birth parents become full and permanent legal members of another family while maintaining genetic and psychological connections to their birth family.

in

ADOPTION AGENCY

A legally regulated entity that provides one or more of the following: assessment of prospective adoptive parents, counseling services to birth parents, preparation and placement of children with adoptive families, and post adoption services. Agencies may be public or private, secular or religious, for profit or nonprofit.

Child

ABANDONMENT

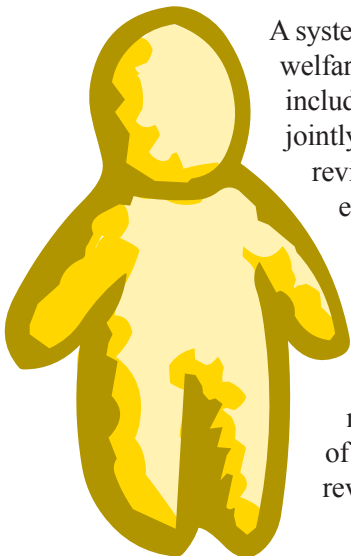
A situation in which the child has been left by the parent(s), the parent's identity or whereabouts are unknown, the child suffers serious harm, or the parent has failed to maintain contact with the child or to provide reasonable support for a specified period of time.

Welfare

CASE PLAN

The casework document that outlines the outcomes, goals, and tasks necessary to ensure child safety, permanency, and well-being.

CASE REVIEW SYSTEM



A system that ensures the periodic review of the status of children in the child welfare system. Federal law requires States to have a case review system that includes processes for (1) the development of a written case plan for each child jointly with the child's parent(s) that includes the required provisions; (2) periodic review of the status of each child no less frequently than once every six months, either by a court or by administrative review; (3) a permanency hearing (for each child in foster care under the supervision of the State) in a qualified court or administrative body no later than 12 months from the date the child entered foster care and no less frequently than every 12 months thereafter; (4) termination of parental rights proceedings in accordance with the provisions of the Adoption and Safe Families Act; and (5) notification of foster parents, pre-adoptive parents, and relative caregivers of children in foster care so that they have an opportunity to be heard in any review or hearing held with respect to the child.

CHILD ABUSE & NEGLECT

Defined by the Child Abuse Prevention and Treatment Act (CAPTA) as any recent act or failure to act on the part of a parent or caretaker that results in death, serious physical or emotional harm, sexual abuse, or exploitation, or an act or failure to act that presents an imminent risk of serious harm. Child abuse and neglect are defined by Federal and State laws. CAPTA is the Federal legislation that provides minimum standards that States must incorporate in their statutory definitions of child abuse and neglect.



DCF

Department of Children
and Families

DOMESTIC/FAMILY VIOLENCE

Encompasses a range of actions, including assault, battery, rape, and murder, committed by someone to whom the victim is intimately related. Intimate relations include spouses, sexual partners, parents, children, siblings, extended family members, and dating relationships.

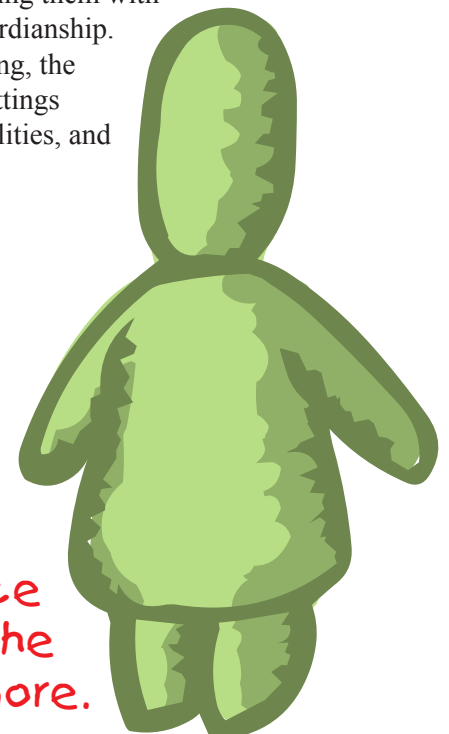


FOSTER CARE

A service for children who cannot live with their custodial parent(s) or guardian(s) for some period of time. Children in foster care may live with relatives, unrelated foster parents, or with families who plan to adopt them. Foster care is intended to be short-term, with the focus on returning children home as soon as possible or providing them with permanent families through adoption or guardianship. For purposes of Federal reporting and funding, the term also describes nonfamily placement settings including group homes, residential care facilities, and supervised independent living.

FOSTER CARE ADOPTION

The adoption of a child from the foster care system after a determination has been made that the child cannot safely reunite with his/her birth family and the parental rights of the birth parents have been terminated.



98% of clients who complete the Family Resource Center Parenting Program stay out of the dependency system for twelve months or more.

Source: Child Welfare Information Gateway



PHOTO COURTESY OF
THE CHILDREN'S TRUST
MIAMI HEART GALLERY

In the last year, 201 children died from abuse or neglect in Florida.



LOOKING INTO THE FUTURE - 2011 and beyond

FRC is poised to continue providing quality services to families in crises while at the same time addressing critical community needs that arise. As FRC continues to grow, space has become an issue. Not to worry, within a few months our clinical department will call the 3rd floor of our current building home. Plans have been drawn to allow us to add an additional 10,000 square feet to our footprint. With the expansion of our clinical department, FRC is also hoping to expand our Parenting Program into residential treatment facilities throughout Miami-Dade. This initiative is aimed at educating families about the causes and preventions of child abuse before it happens. Parenting education is a very strong prevention program and one that can help struggling parents gain the knowledge and skills to create a loving and nurturing family.

We are also trying to open a much needed Supervised Visitation Center to serve our families who have open dependency cases. At present, only one dedicated supervised visitation center remains in Miami-Dade. All others have closed. This space, located at the Family Courthouse downtown, consists of several rooms, each 10' by 10'. There are over 2,000 families involved in the Miami-Dade Dependency Court causing a pressing need to expand this service.

We are also excited to announce the impending expansion of our full case management team – we will be adding a new supervisor, six new case managers, a transportation supervisor and two additional transportation specialists. This staff growth is in response to an additional 111 cases coming to us from One Hope United. We are looking forward to another productive (and busy) year.

THANK YOU FOR YOUR SUPPORT!



**FAMILY
RESOURCE
CENTER**
OF SOUTH FLORIDA, INC.

The highest rate of child abuse
fatalities occurs among children
younger than five.

Making a Difference

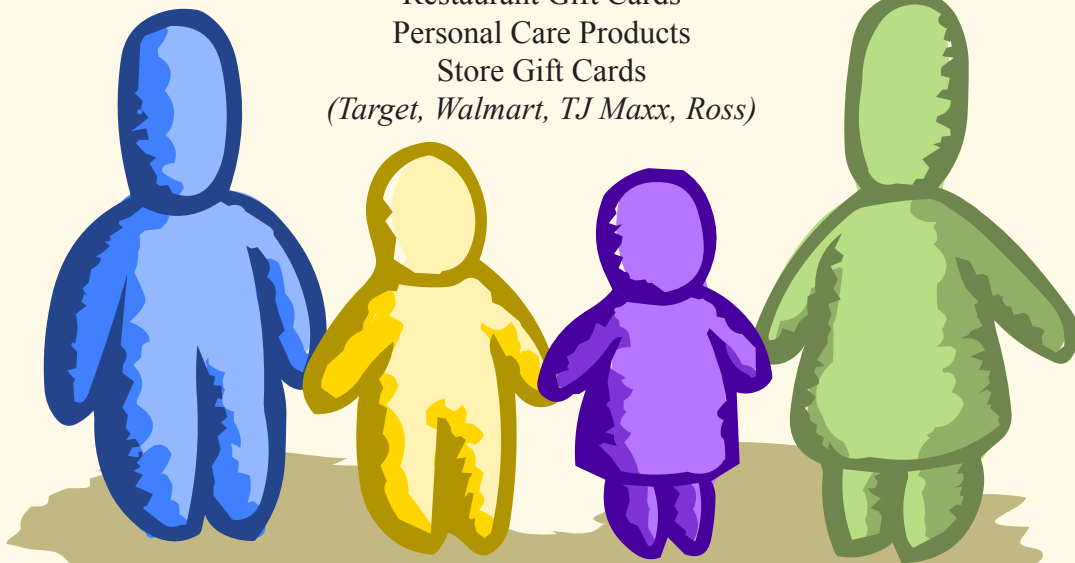
Fostering and adopting are not the only way to make a difference. There are many ways to help a child in foster care. From supporting our annual drives to donating money for an upcoming fundraiser. Your financial gift or in-kind donation may help local foster youth benefit from extracurricular activities. Below are just a few ways in which you can make a difference in a child's life.

WISH LIST

School Supplies
Diapers and Wipes
Movie Passes

Restaurant Gift Cards
Personal Care Products
Store Gift Cards

(Target, Walmart, TJ Maxx, Ross)



**Preventing and Treating Child Abuse &
Neglect by Strengthening Families**